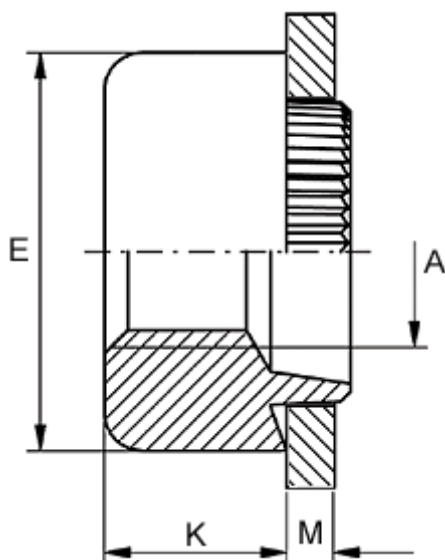


Article number: 12705000080700
Description: KLEE-coil 705 000 080.700
M8 Light-alloy metal

Measures



Female thread A	= M8
Height K	= 6.0
Outer diameter E	= 16.0
Plate thickness	= 1.1 to 1.3
Recommended bore diameter for extreme load	= 13.0
Recommended bore diameter for normal use	= 13.0